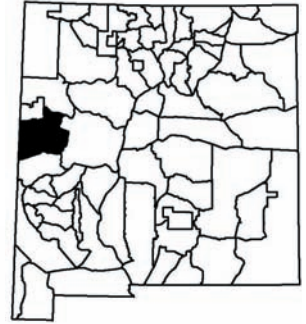




Providing New Mexico
and its wildlife

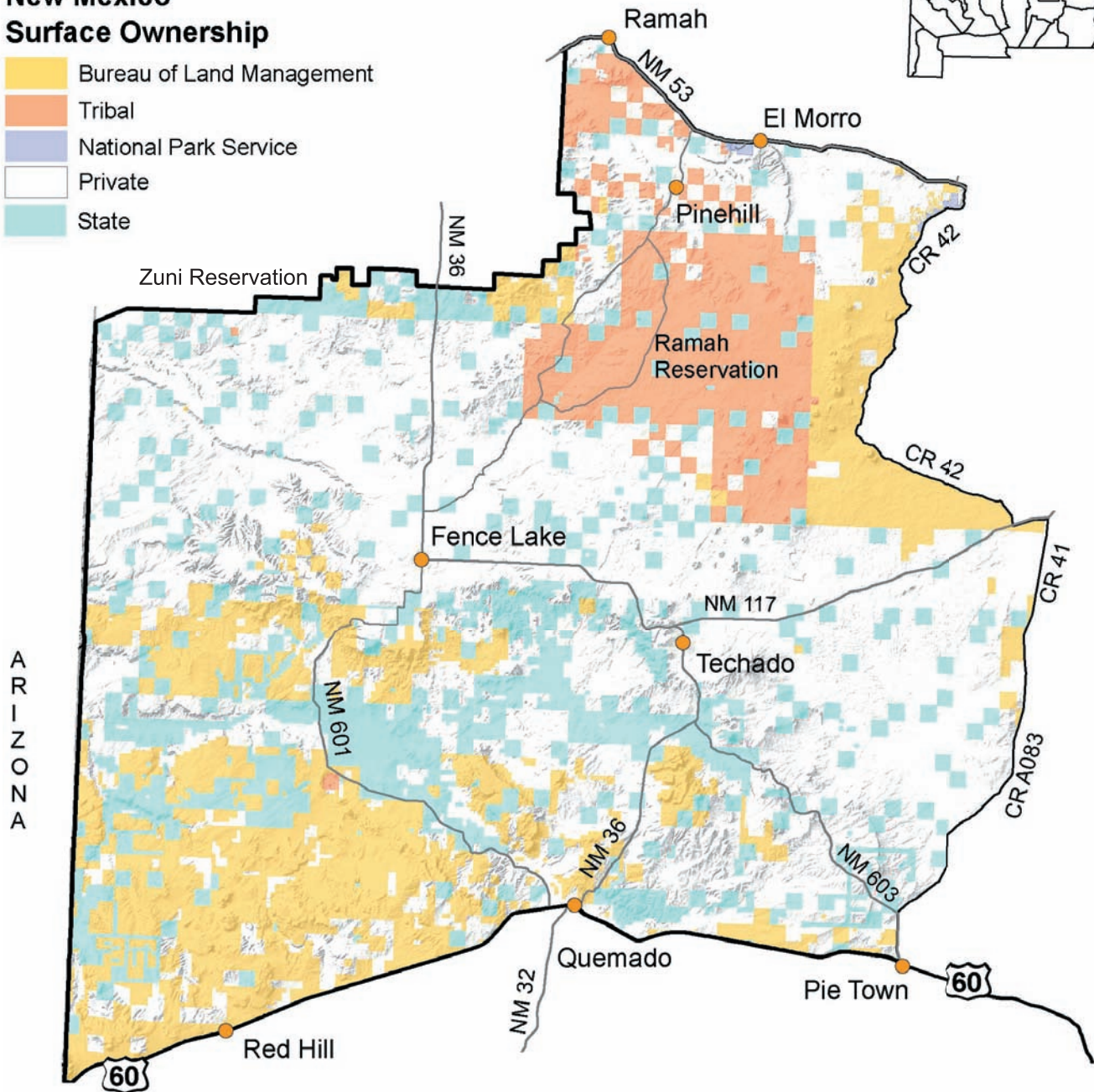
**Year-round
Excellent
Services**

Game Management Unit 12



New Mexico Surface Ownership

-  Bureau of Land Management
-  Tribal
-  National Park Service
-  Private
-  State



GMU 12: Beginning at the intersection of US 60 and the NM/AZ state line and running north along the state line to the south boundary of the Zuni Indian Reservation, then east along the south boundary of the reservation and north along its east boundary to its intersection with NM 53, then east along NM 53 to its junction with Cibola County Road 42, then south along Cibola County Road 42 to its junction with NM 117, then east along NM 117 to its junction with Cibola County Road 41, then south along Cibola County Road 41 to its junction with Catron County Road A083, then south along Catron County Road A083 to its junction with NM 603, then south along NM 603 to its junction with US 60 at Pie Town thence west along US 60 to the NM/AZ state line.

Maps for GMU 12

BLM Maps: Fence Lake Quad and Quemado Quad.

These and other maps may be found at NM Public Lands Information Center, (877) 851-8946, or visit <http://plimapcenter.org/NM/>.